



## **Rabbit anti Myelin Basic Protein Polyclonal Antibody**

**Alternative Name(s): Myelin Basic Protein**

### **Order Information**

- **Description:** MBP (Myelin Basic Protein)
- **Catalogue:** 500-1944
- **Lot:** See label
- **Size:** 100ug/200ul
- **Host:** Rabbit
- **Clone:** nan
- **Application:** IHC(P)
- **Reactivity:** Hu

### **ANTIGEN PREPARATION**

A synthetic peptide of Myelin Basic Protein

### **BACKGROUND**

Myelin basic protein (MBP) is the major extrinsic membrane protein of central nervous system myelin. MBP phosphorylation is a complex regulatory process that modulates the contribution of MBP to the stability of the myelin sheath. Mitogen-activated protein kinases modulate MBP phosphorylation during myelinogenesis and in the demyelinating disease multiple sclerosis. MBP phosphorylation is regulated by high-frequency stimulation but not low-frequency stimulation of the axons, the myelinated output fibers of the hippocampus. It is proposed that during periods of increased neuronal activity, calcium activates axonal nitric oxide synthase, which generates the intercellular messenger nitric oxide and superoxide and regulates the phosphorylation state of MBP by MAPK.

### **PURIFICATION**

The Rabbit IgG is purified by Epitope Affinity Purification

### **FORMULATION**

This affinity purified antibody is supplied in sterile Phosphatebuffered saline (pH7.2) containing antibody stabilizer

### **SPECIFICITY**

This antibody recognizes human MBP (Myelin Basic Protein). The other species not tested.

### **STORAGE**

The antibodies are stable for 24 months from date of receipt when stored at -20°C to -70°C. The antibodies can be stored at 2°C-8°C for three month without detectable loss of activity. Avoid repeated freezing-thawing cycles.

### **APPLICATIONS/SUGGESTED WORKING DILUTIONS\***

- Western Blot: 0.1-1 µg/ml
- ELISA: 0.01-0.1 µg/ml
- Immunoprecipitation: 2-5 µg/ml
- IHC: 2-10 µg/ml
- Flow cytometry: Not tested
- Molecular Weight: 18.0
- Positive Control: Kidney Tissue
- Cellular Location: Cell Membrane

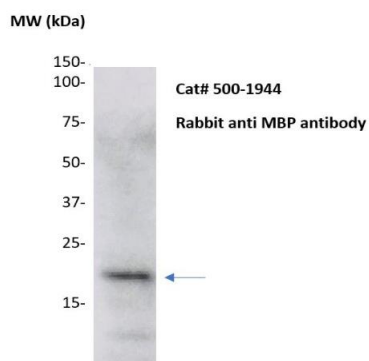
\*Optimal dilutions should be determined by researchers for the specific applications.

### **FOR RESEARCH USE ONLY.**

AbboMax, Inc 2528 Qume Drive, Suite 8, San Jose, California 95131, USA  
1 408-573-1898 (Tel). 1 408-573-1858 (Fax). [www.abbomax.com](http://www.abbomax.com) [info@abbomax.com](mailto:info@abbomax.com)



## DATA ATTACHMENTS



Western Blot: The whole lysate derived from U118MG (20 ug/lane) immunoblotted by Rabbit anti – MBP (Cat# 500-1944) at 1:500. Observed a major immunoreactive band at molecular weight ~18kDa.

## REFERENCES

### FOR RESEARCH USE ONLY.

AbboMax, Inc 2528 Qume Drive, Suite 8, San Jose, California 95131, USA  
1 408-573-1898 (Tel). 1 408-573-1858 (Fax). [www.abbomax.com](http://www.abbomax.com) [info@abbomax.com](mailto:info@abbomax.com)